



RAMONA

MUNICIPAL WATER DISTRICT

CLEANING THE SEWERS OF RAMONA

Sewer cleaning is performed continuously as part of RMWD's ongoing Sewer System Management Plan. Cleaning the sewer pipes ensures proper flow of sewage from your home and/or business to the treatment plants. Every sewer line in Ramona is cleaned every two years. The method of cleaning used by RMWD is "High Velocity Water Jetting."

High Velocity water jetting is essentially a pressure washer, like you would use at home but on a larger scale. Our pressure washer is the size of a trash truck. These machines are designed for cleaning sanitary sewer pipes of varying diameters. When cleaning a sewer line the unit is placed directly over a manhole. The 600 ft. 1 inch, high pressure hose is equipped with a special self-propelling high velocity jet nozzle which is fed directly into the sewer line or pipe. Special attachments known as "Root Cutters" can be attached to the sewer jet hose which can cut through roots in the sewer system in a fraction of the time it would take to do it by hand. Water up to 2,500 PSI at 80 gallons of water per minute (GPM) will thrust the nozzle up the sewer right through clogged materials, relieving the stoppage and washing back any loose debris to be removed. As the hose is withdrawn, the sewer is scoured clean by rear jets in the nozzle which discharge a high velocity stream of water. This method is especially effective when used in combination with the Wet/Dry Vacuum portion of the truck.



If you still have questions, you may check the Frequently Asked Questions (FAQs) link, or contact the Collections Supervisor at (760) 789-1330.



CLEANING NOTIFICATION

RMWD's Collections Division performs cleaning duties throughout the town of Ramona, including SDCE and Mt Woodson Estates. The crew sets up at a manhole, cleans the sewer line and moves onto the next manhole in a matter of minutes; most of the time you would never know they were there. Crew members wear photo identification badges, uniforms and drive vehicles identified with the RMWD seal. Collections staff will not request entry into your home, but will be available in the neighborhood to assist you with any questions about the process.

POSSIBLE ISSUES RELATED TO SEWER CLEANING

- **Sound coming from the plumbing.**

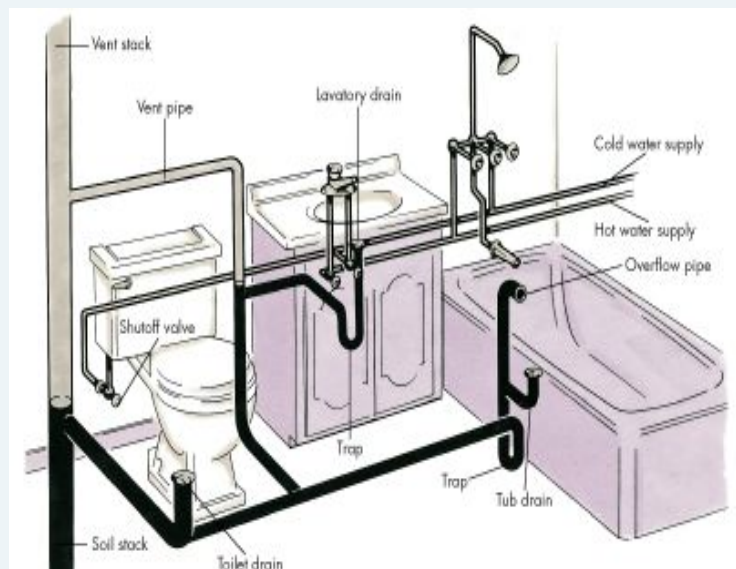
Some of the cleaning nozzles used in high pressure sewer cleaning can be loud; some have said it sounds like a jet engine. The sound of water hitting the sides of pipe creates a sound that can echo throughout the sewer line and can sometimes be heard in your plumbing.

- **Unpleasant smell outside**

High pressure sewer cleaning works by shooting 2000 psi water down the sides of the sewer pipe. As a byproduct of this process, air is sucked into the sewer system from vents in the plumbing and exits out the open manhole where the machine is setup. Because of the nature of what is being cleaned, the air coming from the manhole can sometimes be displeasing. This odor dissipates quickly after exiting the manhole.

- **Unpleasant smell inside your home**

On rare occasions after high pressure sewer cleaning has been performed a sewer smell can be detected inside the home. This can happen when the "pee traps" in the plumbing do not have water in them. "Pee traps" are part of the drains under your sinks, showers, tubs and toilets that, when full of water, prevent the smell from the sewer system to enter the house.



If you still have questions, you may check the Frequently Asked Questions (FAQs) link, or contact the Collections Supervisor at (760) 789-1330.



RAMONA

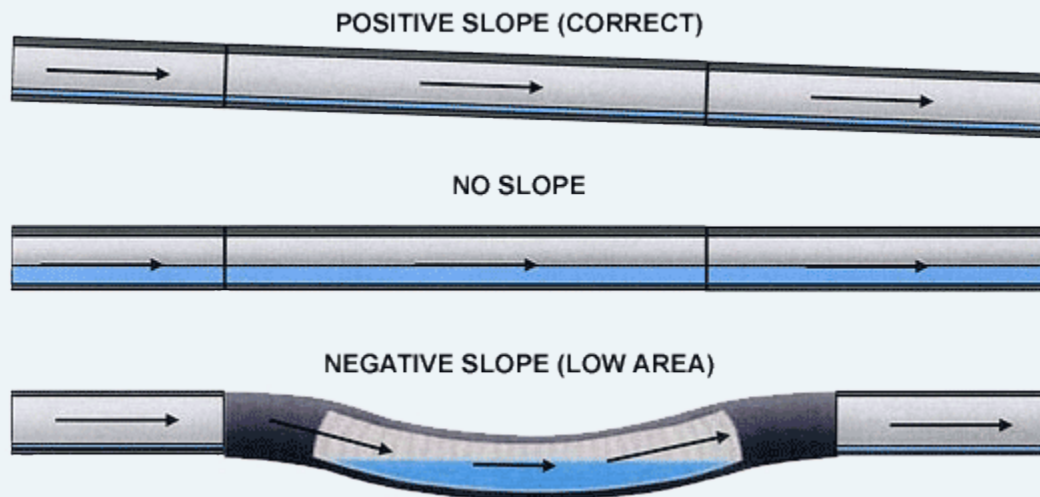
MUNICIPAL WATER DISTRICT

Sometimes vents in the plumbing are not adequate for the amount of suction being created while conducting a high pressure sewer cleaning and pee trap water is inadvertently sucked out. If this occurs you simply need to pour some water down each drain to refill the traps and the smell will go away.

- **Sewer backup in the house or business**

On very rare occasions while cleaning the sewer system the plumbing could backup into the structure's toilet or tub. This typically happens when the building's plumbing does not have a proper fall in the sewer lateral connecting to the sewer system. When there is a negative slope in the sewer lateral, sometimes called a "belly," the sewage sits in the pipe rather than draining into the sewer main. Air pressure created from the high pressure sewer cleaning equipment can cause the sewage caught in the belly to be pushed back up the pipe.

If this occurs in your home or business please call RMWD at 760-789-1330 and report the situation so that we may deal with the issue properly.



If you still have questions, you may check the Frequently Asked Questions (FAQs) link, or contact the Collections Supervisor at (760) 789-1330.